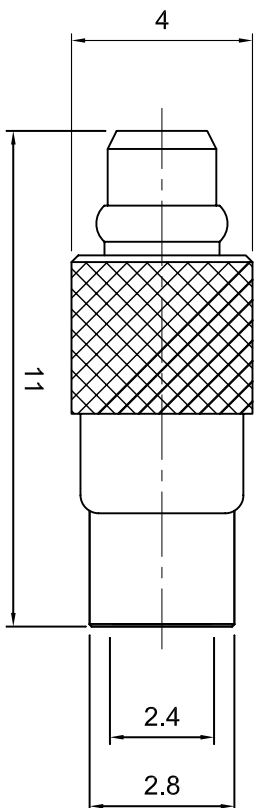



All components used in this connector conform to RoHS standards.

Approved by:
Date:



tolerances	Description/Approved/Date	Drawn	Date
-20=+/-0.2	1. Ferrule Adj., M.H., 5/17/01	S.A.	10/10/08
0-30=+/-0.3			
0-40=+/-0.4			
0-50=+/-0.5			
-100=+/-0.75			
0-300=+/-1.5			
Angles=+/-1			
Dimensions are in Millimeters			



ITEM	MATERIAL	FINISH	Description
Connector Body	Brass, Note 1	Gold, Note 8	 <p>Lighthouse Technologies, Inc. 9511 Ridgehaven Ct, Suite B San Diego, CA 92123 Part Number: LTI-MC3M31GT-086</p>
Center Contact: Male	Brass, Note 1	Gold, Note 11	
Insulation	Teflon, Note 5	None	
Ferrule	--	--	
Gasket	--	--	
Hex Nut	--	--	brass body, teflon dielectric.
Lock Washer	--	--	MMCX solder plug for semi-rigid .086 cable. Gold plated

Description	MMCX solder plug for semi-rigid .086 cable. Gold plated
Scale	5:1
Drawing No.	MMCX/MC3M31-086
File Name	MC3M31-086